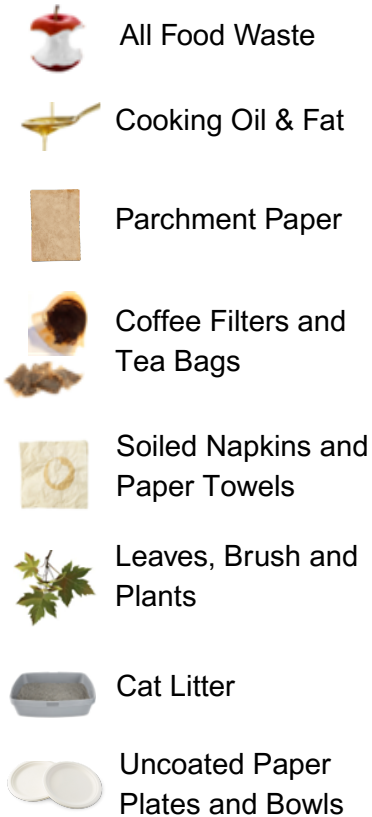
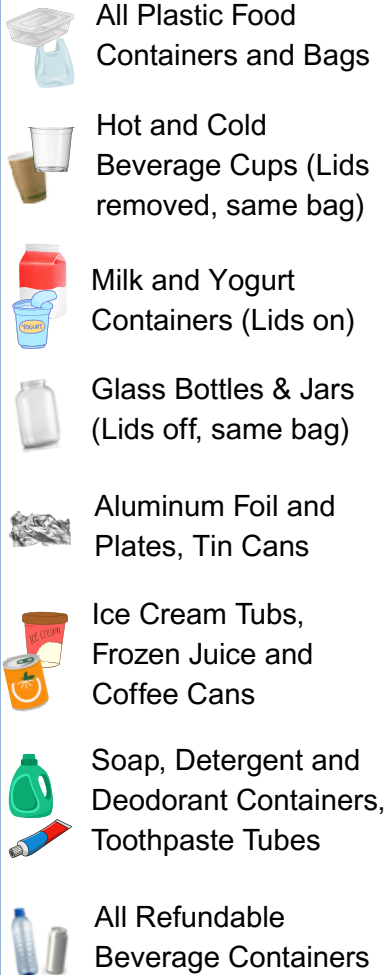
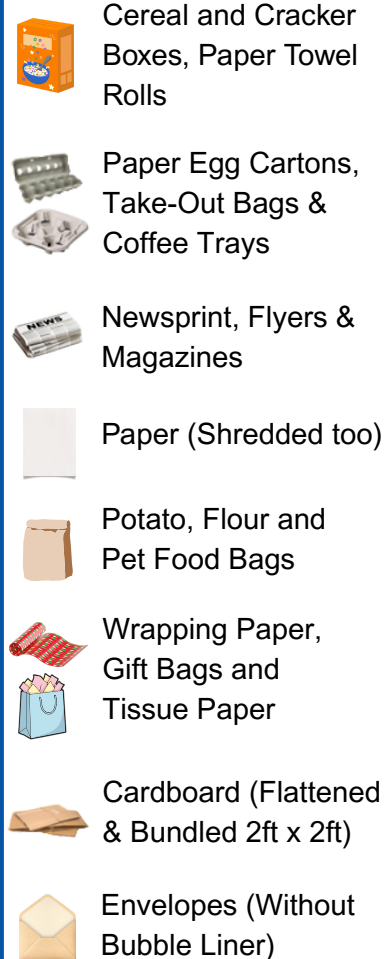


**GREEN CART
ORGANICS**


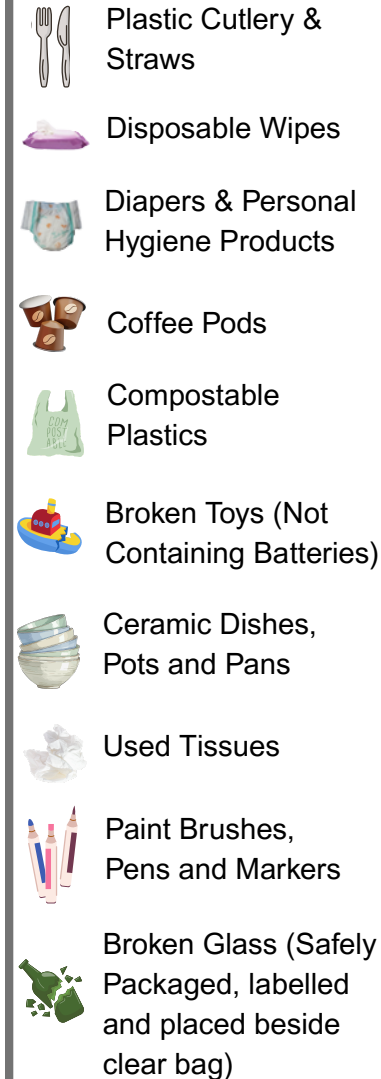
- No plastic bags, including those labelled "compostable" or "biodegradable"
- NO ashes
- NO glass or metals
- NO milk cartons
- NO diapers, wipers or personal hygiene products

**BLUE BAG 1
RECYCLABLE CONTAINERS**


- Must be **EMPTY** and **CLEAN**
- NO paper
- NO plastic cutlery or straws
- Refundable Beverage Containers can be returned to an Enviro-Depot™

**BLUE BAG 2
RECYCLABLE PAPER**


- Must be **CLEAN** and **DRY**
- NO plastic
- NO disposable cups
- Place flattened and bundled cardboard next to your blue bag at the curb

**GARBAGE
CLEAR BAGS (+1 PRIVACY BAG)**


Download our app "Pictou County Solid Waste" to receive collection & event notifications

**HOUSEHOLD HAZARDOUS
WASTE (HHW)**


HHW materials can be dropped off at the Pictou County Solid Waste Facility during regular hours

OTHER
Electronics

Many electronics can be dropped off for recycling. See locations and accepted items: recycleMYelectronics.ca/ns

Batteries

Drop off at any Town or Municipal Office in Pictou County

Clothes/Textiles

Donate old clothes, shoes and textiles at donation bins across Pictou County

Medications/Sharps

Return to pharmacy. Pick up safe sharps container at the pharmacy



GREEN CART ORGANICS

Collected every two weeks.

New homes eligible for the curbside collection of organics receive a green cart and mini-bin.

Green carts remain at your property if you move.

Weight limit of 100 kg (220 lb.) to ensure the cart is not damaged otherwise the equipment will not empty it.

Branches tied in armload sized bundles can be placed beside your green cart for collection. The bundles must be a maximum of 4 feet long.

Wrap wet organics in paper to help keep your cart clean.

If your cart is damaged, call 902-395-1495 to arrange repair or replacement.

BLUE BAG 1 RECYCLABLE CONTAINERS

Collected every two weeks.

Transparent blue bags required.

There are no limits to the amount of recycling bags allowed.

Beverage containers can also be redeemed at a local Enviro-Depot™. Visit www.divertns.ca for full details and a list of locations.

Ensure materials are clean prior to placing in blue bags.

New! Non-hazardous aerosol containers, foam packaging and flexible plastics, such as chip bags and candy wrappers, can be recycled at various depots across Nova Scotia. To find a participating drop-off nearest you and more details on materials you can drop-off, visit www.circularmaterials.ca/nsdepots/

BLUE BAG 2 RECYCLABLE PAPER

Collected every two weeks.

Transparent blue bags required.

Do not mix recyclable containers and paper in the same bag or it will be stickered and left behind at the curbside.

There are no limits to the amount of recycling bags allowed.

Corrugated cardboard: Boxes must be flattened and bundle to a size no larger than 2ft x 2ft. Place bundles beside blue bags.

Ensure paper is clean and dry.

NO recyclables or organics are permitted in the garbage.

GARBAGE CLEAR BAGS (+1 PRIVACY BAG)

Collected every two weeks.

There is a 4 bag limit of garbage per collection. Each home may place 4 clear bags of garbage at the curb for collection,

OR A COMBINATION OF:

3 clear bags & 1 solid colour bag of garbage,

OR A COMBINATION OF:

clear bags of garbage & paper bags of leaves, not exceeding 4 bags in total.

Apartment Residents:
If you live in an apartment building where garbage is placed in an outside storage container, you are NOT permitted to use any solid colour bags. Material MUST be placed in clear bags.

All garbage delivered to the Pictou County Waste Management Facility MUST be in clear bags.

HOUSEHOLD HAZARDOUS WASTE (HHW)

Household hazardous waste is not collected curbside.

HHW materials can be brought to the Pictou County Waste Management Site located at 220, Landfill Road, Mount William during regular business hours.

HHW materials can also be taken to special community events held throughout the year.

No business waste accepted.

Only residential households within Pictou County are eligible for this free drop-off service.

Questions?

Visit:

www.pcwastemgmt.com

Or Phone:

902-396-1495